



Let **UK** Home

1 Bedrooms

Flat - Studio

Located in London

£2,700 Per Month



info@letukhome.co.uk

<https://www.letukhome.co.uk/>

01795 358 886



16 Paddington Green London

W2 1BY



Let UK Home are delighted to offer this brand new studio apartment in Alcindor Mansions, part of the West End Gate development.

The studio comprises a spacious open kitchen with a stylishly attached dining area, a magnificent living/sleeping area, one modern bathroom and ample storage.

The development is situated between two renowned parks in London. To the south lies Hyde Park, while Regent's Park is to the northeast. The nearby Regent's Canal, famously known as "Little Venice," flows through the area, offering serene and charming water views that create a delightful and refreshing atmosphere.

Along the banks of the Regent's Canal, a variety of restaurants, cafes, and bars abound. World-famous shopping districts such as Mayfair, Soho, and Harrods are within easy reach, with the West End shopping paradise just a short stroll away, allowing residents to fully enjoy the excitement and endless pleasures of London.

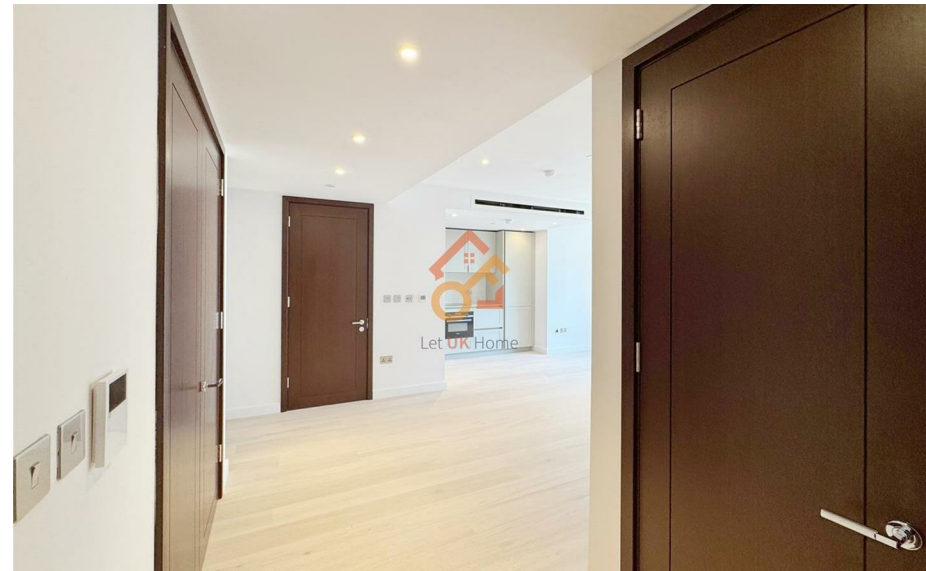
West End Gate will offer high-quality leisure facilities, including a spacious, five-star hotel-style lobby, a 20-meter swimming pool, a spa area with a sauna and steam room, and a fully equipped gym adjacent to rest rooms. Additionally, the development will feature a private cinema and a comprehensive security system.

16 Paddington Green London

£2,700 Per Month



- 1st Floor
- The Spa
- 24h Security
- Cinema & Game Room
- Swimming Pool
- The Gym
- Concierge Service
- Sauna & Steam Room



Manhattan Apartment

PRICE:
From £695,500

TOTAL INTERNAL AREA:
44m²

COMPLETION:
April / May 2026

KEY FEATURES:

- Manhattan, one bathroom.
- Available on first, second and third floor.
- W2 location, minutes from Marylebone.
- Two minute* walk from Edgware Road Underground station.
- Situated between Regent's Park and Hyde Park.
- The Residences on Paddington Green overlooks a central landscaped courtyard.
- Swimming pool, spa, gym, concierge & cinema room, Residents' dining room & lounge.
- CCTV monitoring combined with individual apartment video entry system.



Floorplan subject to planning.

Level	1, 2, 3	
Living/Sleeping Area	7.17 x 3.28	23'6" x 10'9"
Kitchen/Dining	3.27 x 2.18	10'8" x 7'1"
Total Internal Area	44m ²	474 sq ft



Let **UK** Home

3F 2 Eastbourne Terrace
Paddington
London
W2 6LG

01795 358 886

info@letukhome.co.uk

Council Tax Band:

Local Authority:

Agents Note: Whilst every care has been taken to prepare these particulars, they are for guidance purposes only. All measurements are approximate and are for general guidance purposes only and whilst every care has been taken to ensure their accuracy, they should not be relied upon and potential buyers/tenants are advised to recheck the measurements.

Energy Efficiency Rating		Current	Potential
Very energy efficient - lower running costs			
(92 plus) A			
(81-91) B			
(69-80) C			
(55-68) D			
(39-54) E			
(21-38) F			
(1-20) G			
Not energy efficient - higher running costs			
England & Wales	EU Directive 2002/91/EC		

<https://www.letukhome.co.uk/>